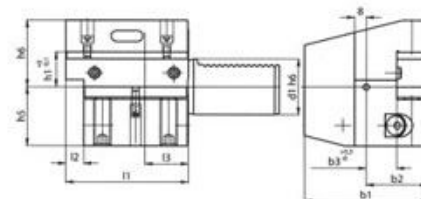


DIN
69880

233600 轴向工件夹具, 倒置右手式, 规格 C3

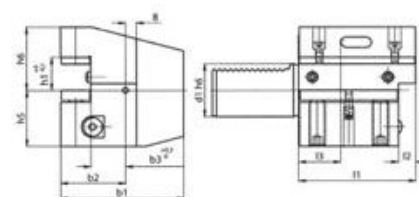
规格 $d_1 \times h_1 \times l_2$ mm	233600 (RG 2300)	d_1 mm	b_1 mm	b_2 mm	b_3 mm	h_1 mm	h_5 mm	h_6 mm	l_1 mm	l_2 mm	l_3 mm
C316×12×44	○	16	43	24,0	13,0	12	20,0	22,0	44	5	20
C320×16×50	○	20	65	40,0	26,0	16/12	25,0	30,0	50	-	30
C320×16×55	○	20	52	27,0	13,0	16/12	25,0	30,0	55	7	30
C325×16×55	○	25	58	33,0	19,0	16/12	25,0	30,0	55	7	20
C330×20×70	●	30	70	35,0	17,0	20/16	35,0	38,0	70	10	30
C340×25×85	●	40	85	42,5	21,0	25/20	42,5	48,0	85	12,5	30
C350×32×100	○	50	100	50,0	26,0	32/25	50,0	60,0	100	16	40
C360×32×125	○	60	125	62,5	33,0	32/25	62,5	62,5	125	16	40



DIN
69880

233650 轴向工件夹具, 倒置左手式, 规格 C4

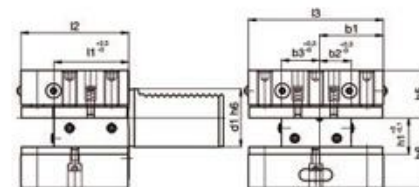
规格 $d_1 \times h_1 \times l_2$ mm	233650 (RG 2300)	d_1 mm	b_1 mm	b_2 mm	b_3 mm	h_1 mm	h_5 mm	h_6 mm	l_1 mm	l_2 mm	l_3 mm
C416×12×44	○	16	43	24,0	13,0	12	20,0	22,0	44	5	20
C420×16×50	○	20	65	40,0	26,0	16/12	25,0	30,0	50	-	30
C425×16×55	○	25	58	33,0	19,0	16/12	25,0	30,0	55	7	20
C430×20×70	●	30	70	35,0	17,0	20/16	35,0	38,0	70	10	30
C440×25×85	●	40	85	42,5	21,0	25/20	42,5	48,0	85	12,5	30
C450×32×100	○	50	100	50,0	26,0	32/25	50,0	60,0	100	16	40
C460×32×125	○	60	125	62,5	33,0	32/25	62,5	62,5	125	16	40



DIN
69880

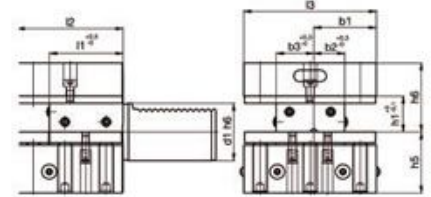
233700 带多重夹紧的工件夹具 规格 D1

规格 $d_1 \times h_1 \times l_2$ mm	233700 (RG 2300)	d_1 mm	b_1 mm	b_2 mm	b_3 mm	h_1 mm	h_5 mm	h_6 mm	l_1 mm	l_2 mm	l_3 mm
D125×16×48	○	25	33,0	19,0	19,0	16/12	25,0	30,0	34	48	66
D130×20×60	●	30	35,0	17,0	23,0	20/16	28,0	38,0	42	60	76
D140×25×72	●	40	42,5	21,0	25,5	25/20	32,5	48,0	50	72	90
D150×32×85	●	50	50,0	26,0	30,5	32/25	35,0	60,0	60	85	105
D160×32×110	○	60	57,5	33,0	33,0	32/25	42,5	62,5	85	110	115



● = 德国中央仓库库存
○ = 德国工厂仓库供货

DIN
69880



233750 带多重夹紧的工件夹具, 倒置, 规格 D2

规格 $d_1 \times h_1 \times l_2$ mm	233750 (RG 2300)	d_1 mm	b_1 mm	b_2 mm	b_3 mm	h_1 mm	h_2 mm	h_3 mm	l_1 mm	l_2 mm	l_3 mm
D225×16×48	○	25	33,0	19,0	19,0	16/12	25,0	30,0	34	48	66
D230×20×60	●	30	35,0	17,0	23,0	20/16	35,0	38,0	42	60	76
D240×25×72	●	40	42,5	21,0	25,5	25/20	42,5	48,0	50	72	90
D250×32×85	○	50	50,0	26,0	30,5	32/25	50,0	60,0	60	85	105
D260×32×110	○	60	57,5	33,0	33,0	32/25	62,5	62,5	85	110	115

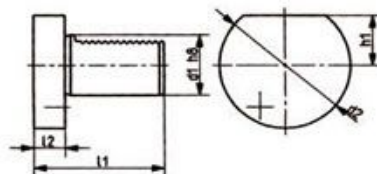


技术说明:

233900: 方形填充块用于特殊规格 规格 A1
柄和挡块经过热处理和研磨

233950: 圆形填充块 用于特殊规格规格 A2
柄和挡块经过热处理和研磨

DIN
69880



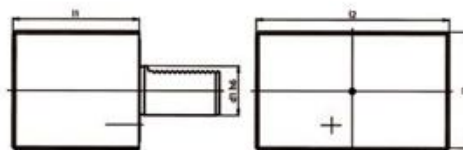
233800 螺旋塞 规格 Z2 S 钢材料

233850 螺旋塞 规格 Z2 P 塑料

规格 d ₁ mm	233800 (RG 2300)	233850 (RG 2300)	d ₁ mm	d ₂ mm	h ₁ mm	l ₁ mm	l ₂ mm
Z216P	—	○	16	40	18,0	48	16
Z216S	○	—	16	40	18,0	48	16
Z220P	—	●	20	50	23,0	56	16
Z220S	○	—	20	50	23,0	56	16
Z225S	○	—	25	58	25,0	64	16
Z230P	—	●	30	68	28,0	71	16
Z230S	●	—	30	68	28,0	71	16

规格 d ₁ mm	233800 (RG 2300)	233850 (RG 2300)	d ₁ mm	d ₂ mm	h ₁ mm	l ₁ mm	l ₂ mm
Z240P	—	●	40	83	32,5	83	20
Z240S	●	—	40	83	32,5	83	20
Z250P	—	●	50	98	35,0	98	20
Z250S	●	—	50	98	35,0	98	20
Z260P	—	○	60	123	42,5	114	20
Z260S	○	—	60	123	42,5	114	20
—	—	—	—	—	—	—	—

DIN
69880

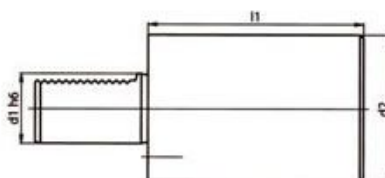


233900 方形-填充块 规格 A1

规格 d ₁ ×l ₁ mm	233900 (RG 2300)	d ₁ mm	b mm	h mm	l ₁ mm
A116×44	○	16	78	44	44
A120×65	○	20	100	60	65
A125×75	○	25	100	60	75
A130×85	●	30	130	76	85

规格 d ₁ ×l ₁ mm	233900 (RG 2300)	d ₁ mm	b mm	h mm	l ₁ mm
A140×100	●	40	151	96	100
A150×125	○	50	160	120	125
A160×160	○	60	165	125	160
—	—	—	—	—	—

DIN
69880



233950 圆形-填充块 规格 A2

规格 d ₁ ×l ₁ mm	233950 (RG 2300)	d ₁ mm	d ₂ mm	l ₂ mm
A216×60	○	16	40	60
A220×70	○	20	50	70
A225×80	○	25	58	80
A225×200	○	25	58	200
A230×100	●	30	68	100
A230×240	○	30	68	240

规格 d ₁ ×l ₁ mm	233950 (RG 2300)	d ₁ mm	d ₂ mm	l ₂ mm
A240×120	●	40	83	120
A240×320	●	40	83	320
A250×135	●	50	98	135
A250×400	●	50	98	400
A260×150	○	60	123	150
A260×480	●	60	123	480